

TL2 Series

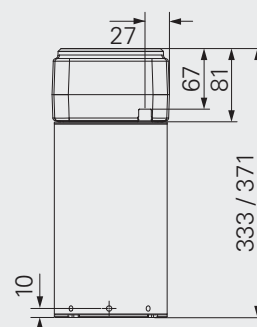
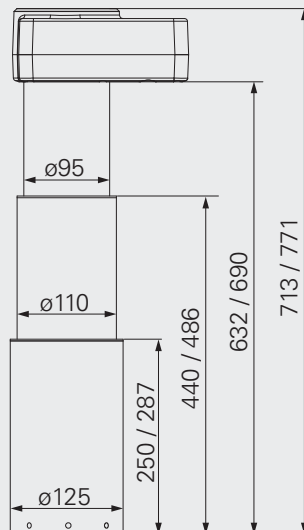
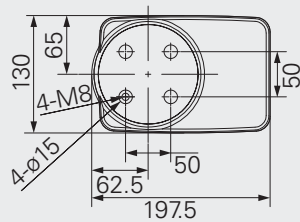


○ Care-motion

Feature

- Maximum load: 2,000N in push
- Maximum load: 500N in pull
- Maximum speed: 19mm/s
- Color: black or grey
- Options: safety nut, Hall/Reed sensor
- RoHS compliant

Appendix						
CODE	Rated Load		SELF LOCKING KG (PUSH)	Typical Current at Rated Load (A)	Typical Speed	
	PUSH KG	PULL KG			No Load (32VDC) mm/s	Rated Load (24VDC) mm/s
Standard Motor (2600RPM)						
D	200	50	200	3.3	14.8	8
E	150	50	200	2.6	14.8	8.7
Fast Motor(3400RPM)						
M	200	50	200	4	19	10
N	150	50	200	3	19	11



TL2 Ordering Key:

Version: B

REV.B	T L 2 - X	X - X X X	X X X - X	X - X	X	X
Voltage						
12V	1					
24V	2					
36V	3					
Load and speed						
See Appendix						
Stroke						
380 (150KG standard)						
400 (200KG standard)						
Retracted length						
333 (150KG standard)						
371 (200KG standard)						
Color						
Black				1		
Grey (Pantone 428C)				2		
Waterproof						
Washable					6	
Special functions for spindle sub-assembly						
Without (standard)						0
Safety nut						1
Functions for limit switches						
Two switches at the retracted/extended positions to cut current.						1
Two switches at the retracted/extended positions to send signal.						3
Customized						A
Output signals						
Without						0
Hall sensor						2
Reed Sensor						3

Version	Date	Description
B	2011/8/31	Revise stroke and retracted length